

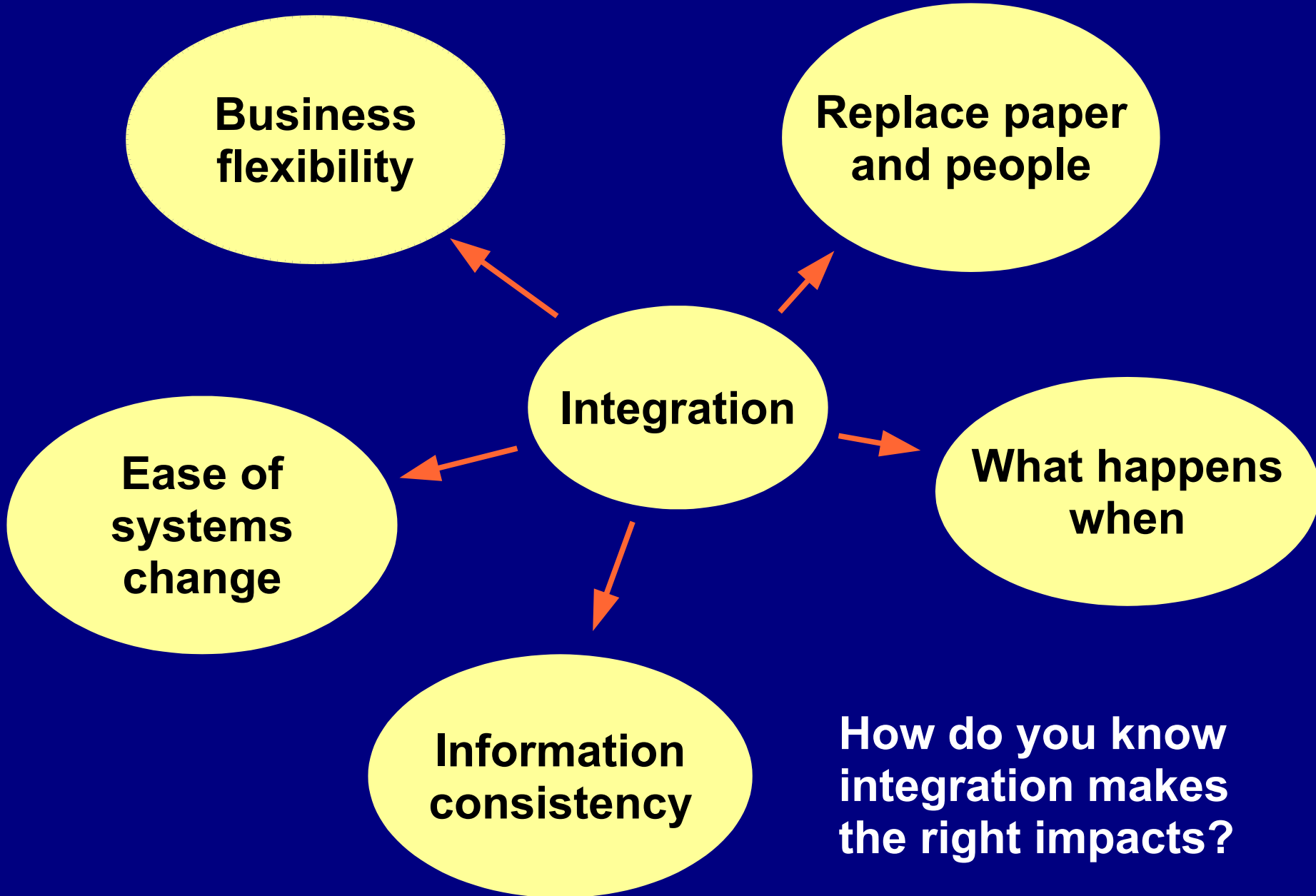
# Business Aligned Integration Architecture

Andrew Clifford  
Minimal IT Ltd

[andrew.clifford@minimalit.com](mailto:andrew.clifford@minimalit.com)  
<http://www.minimalit.com>

# Agenda

- The importance of integration
- Integration conceptual taxonomy
- Orientations: expansive and minimal
- Impact on integration
- The need for debate

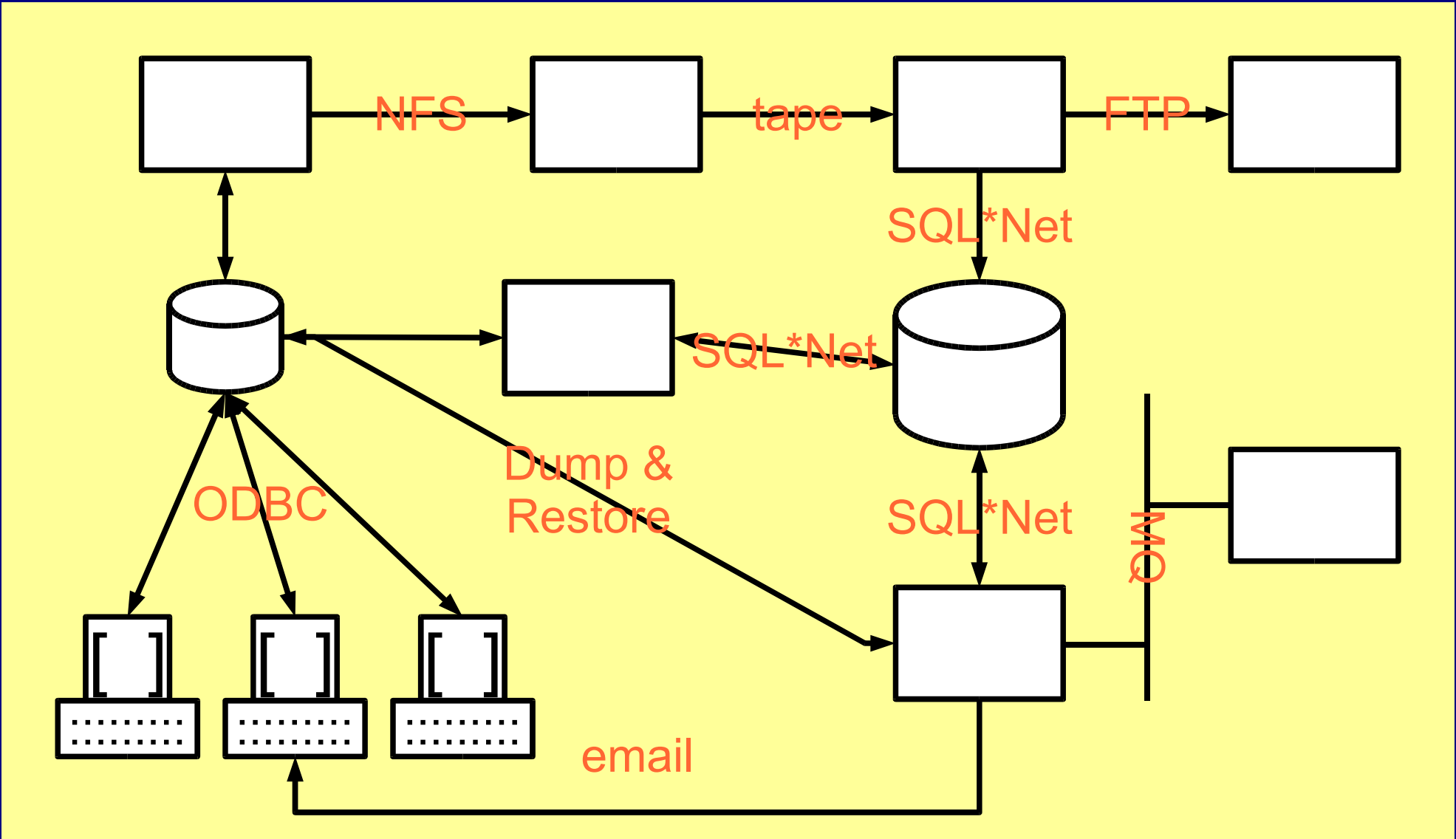


**How do you know  
integration makes  
the right impacts?**



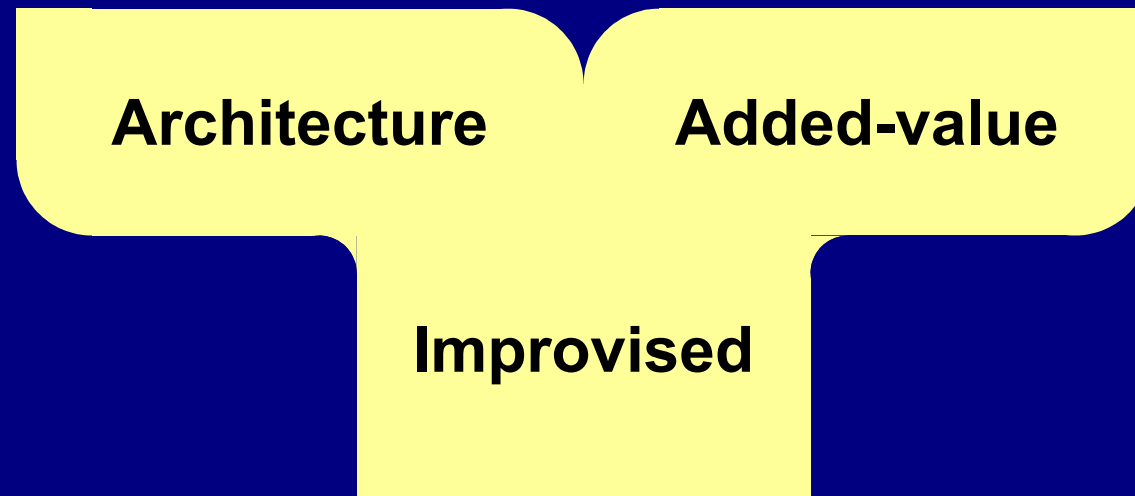
**Improvised**

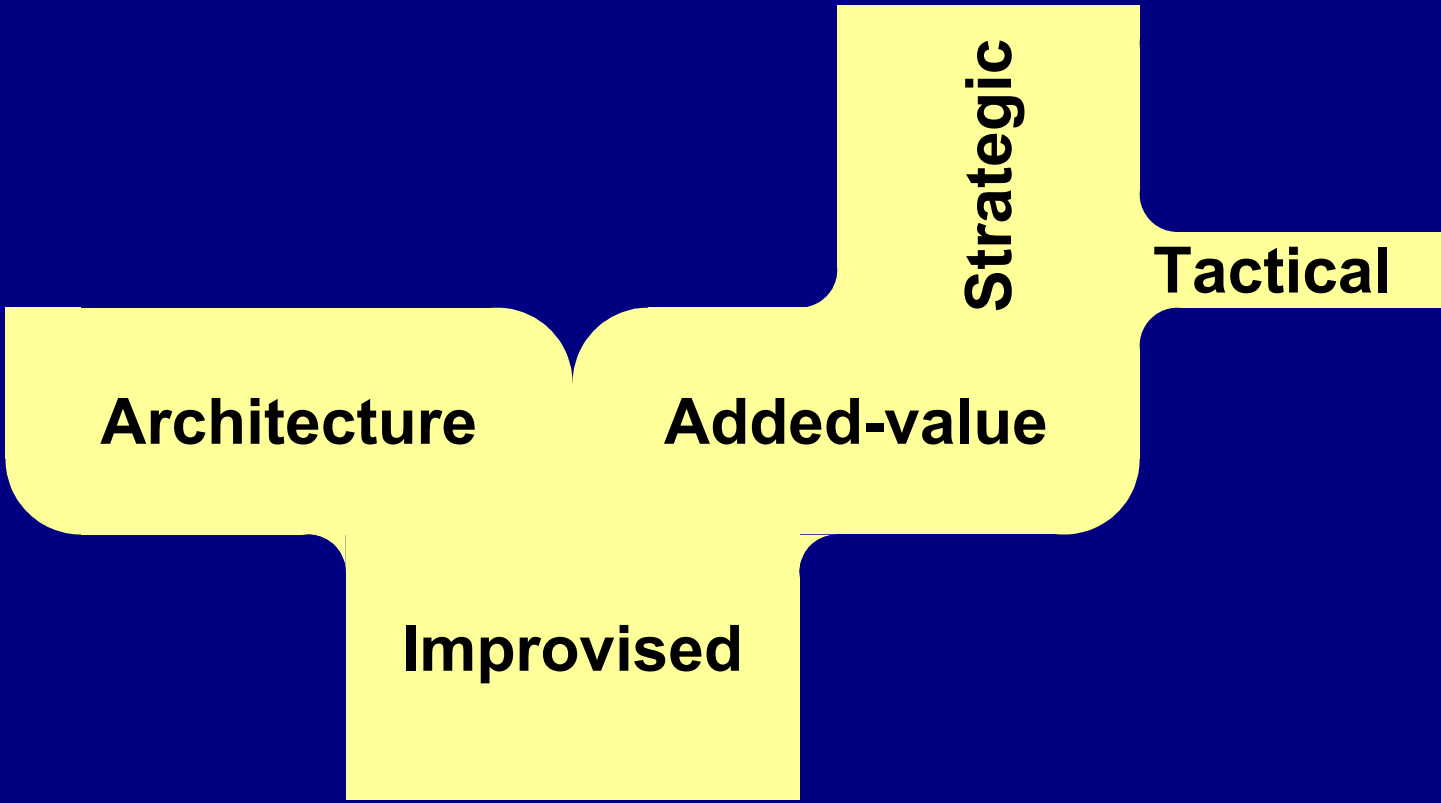
# Improvised connectivity uses whatever is convenient





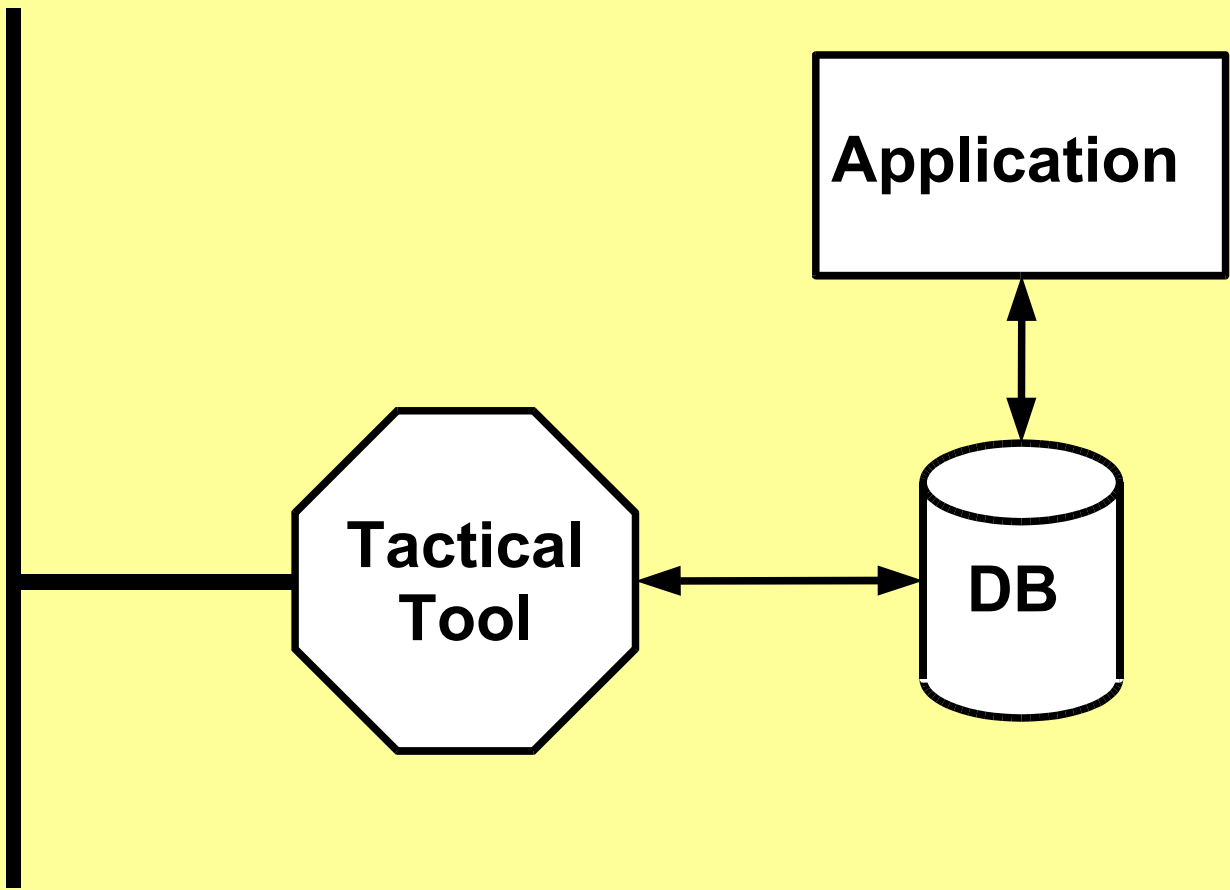
**Improvised**



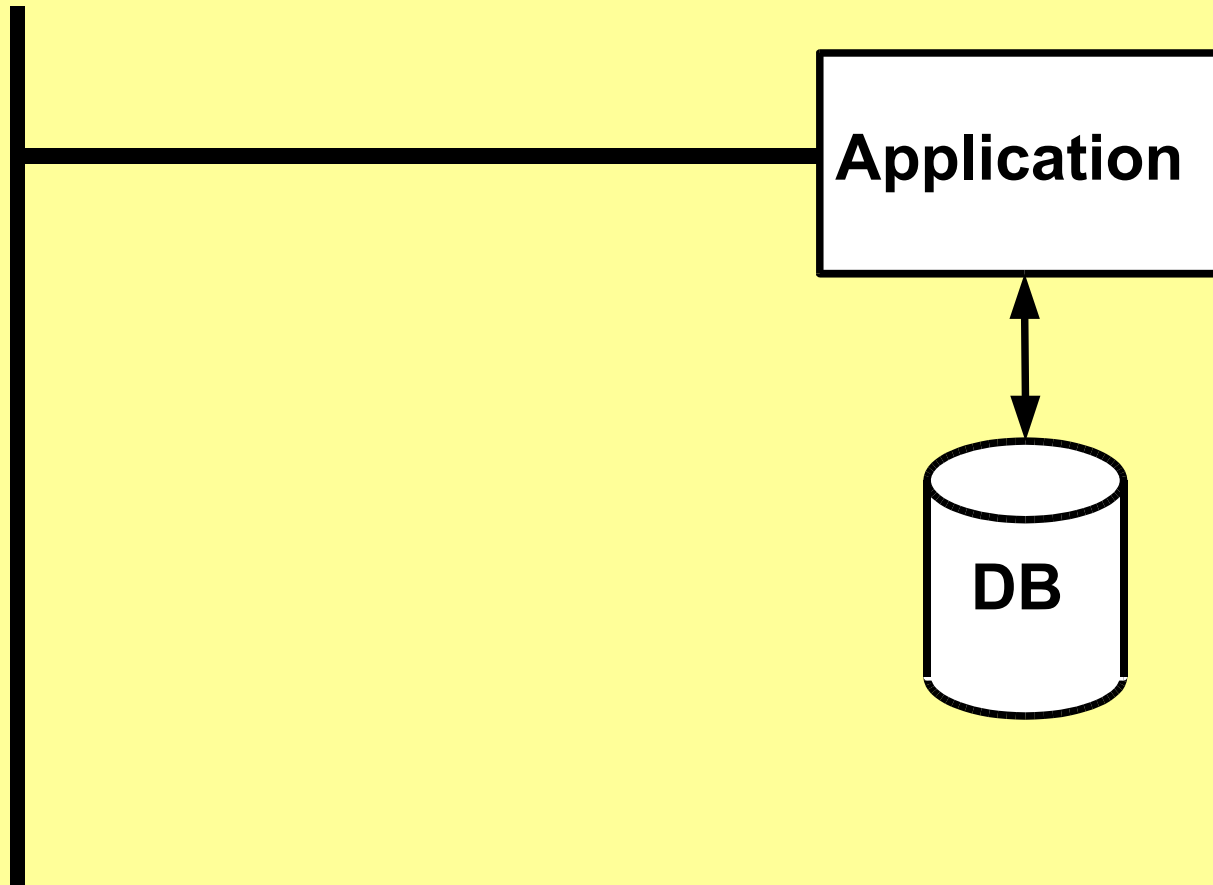


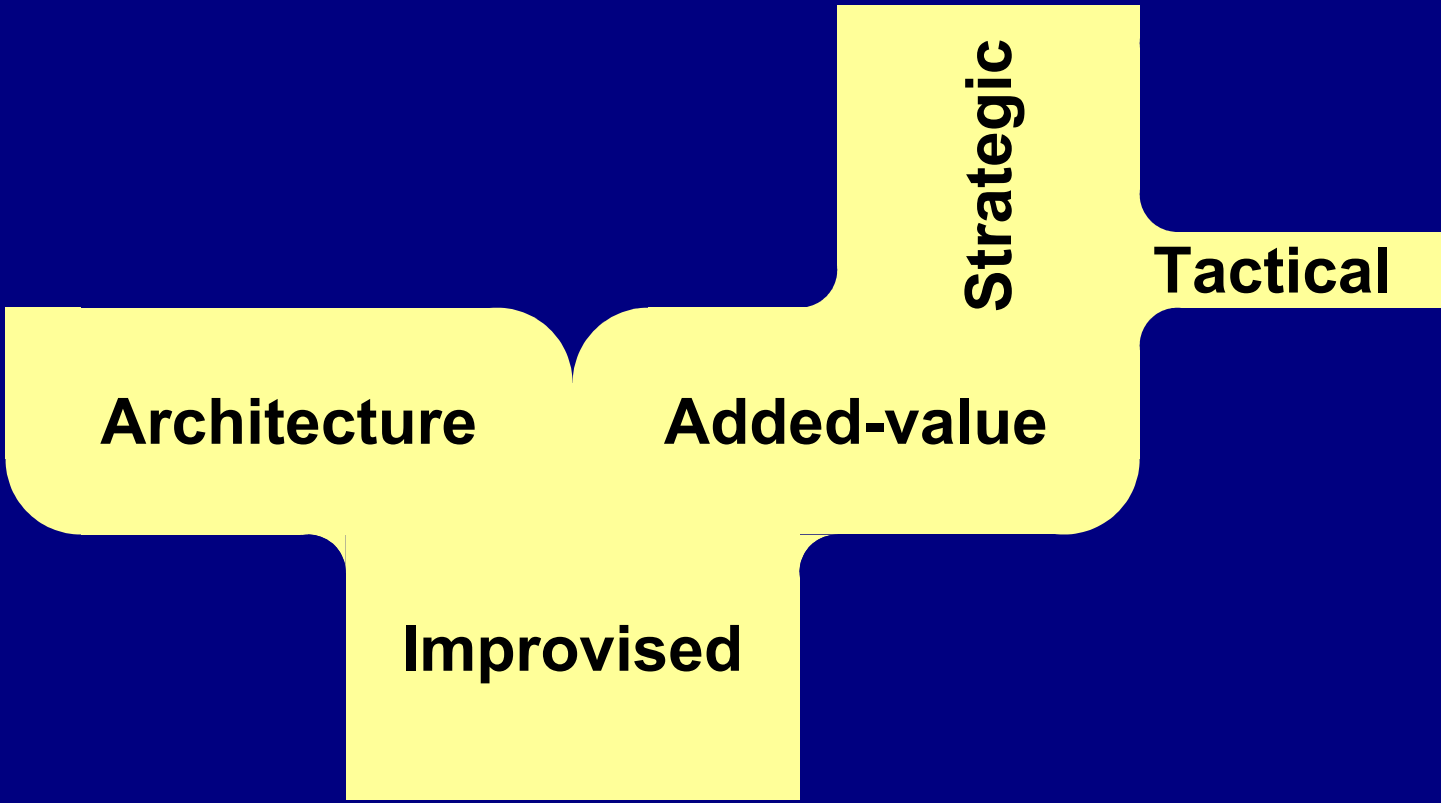


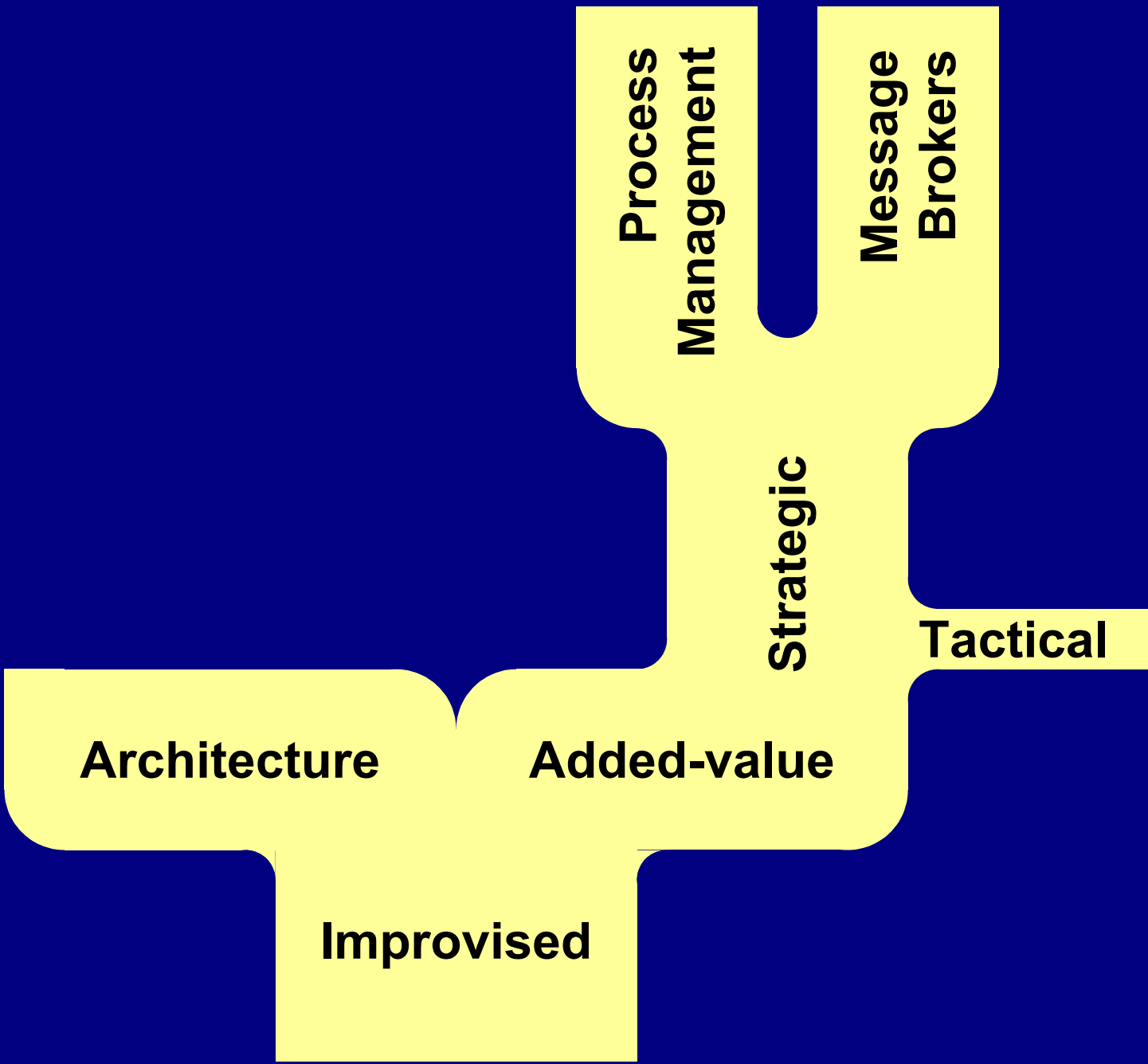
**Using middleware tools to fix problems in applications leads to long-term problems.**



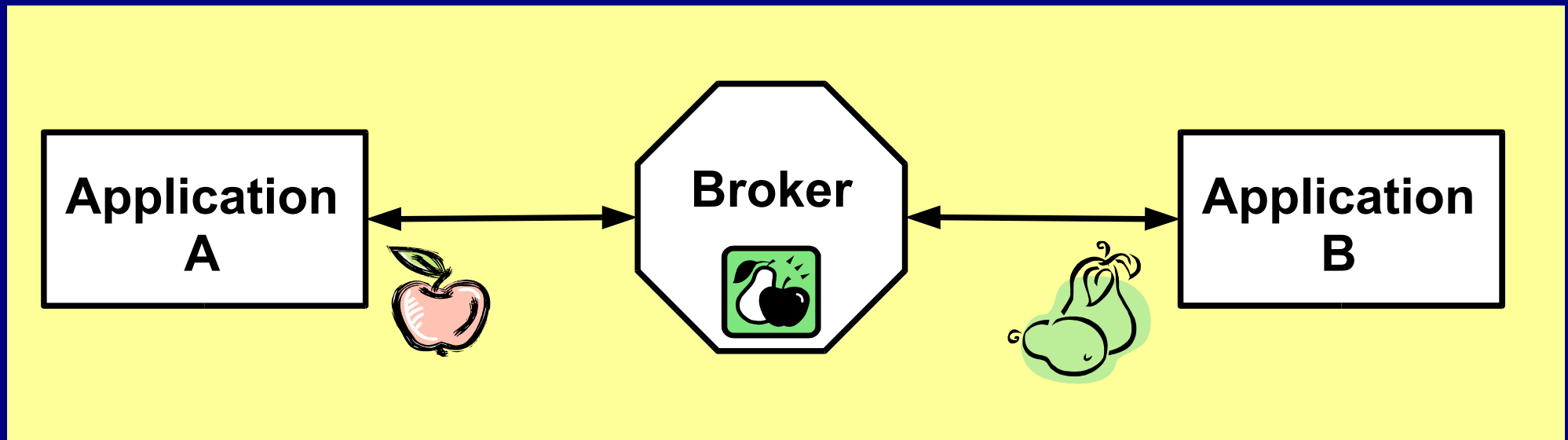
**In the long run, it is better to design problems out of the architecture.**





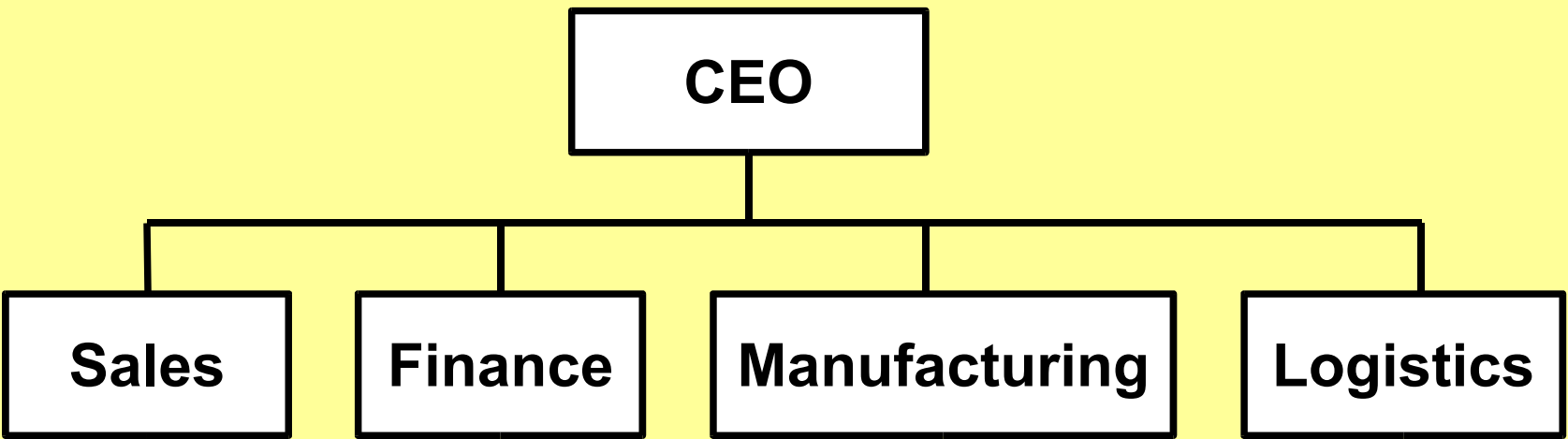


Using a broker to hide real differences of meaning leads to long-term support problems.

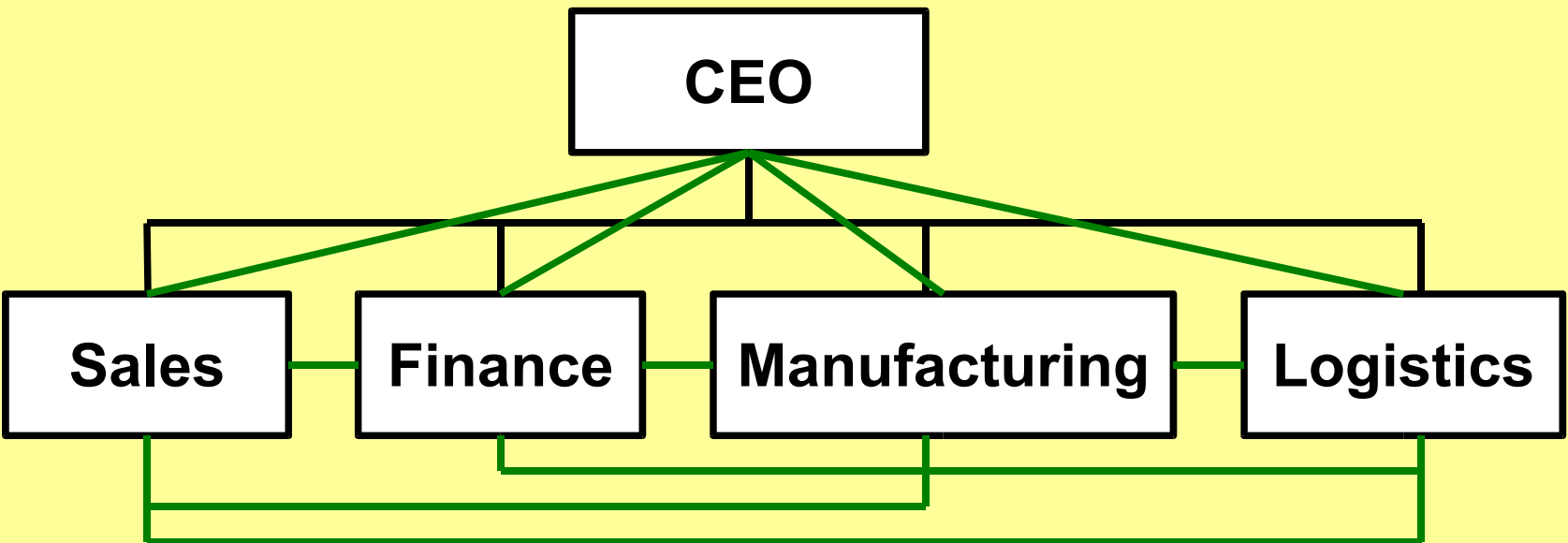




# Hierarchical breakdown of responsibility

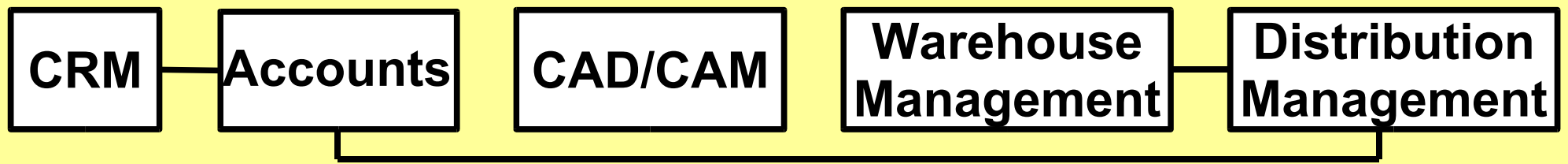
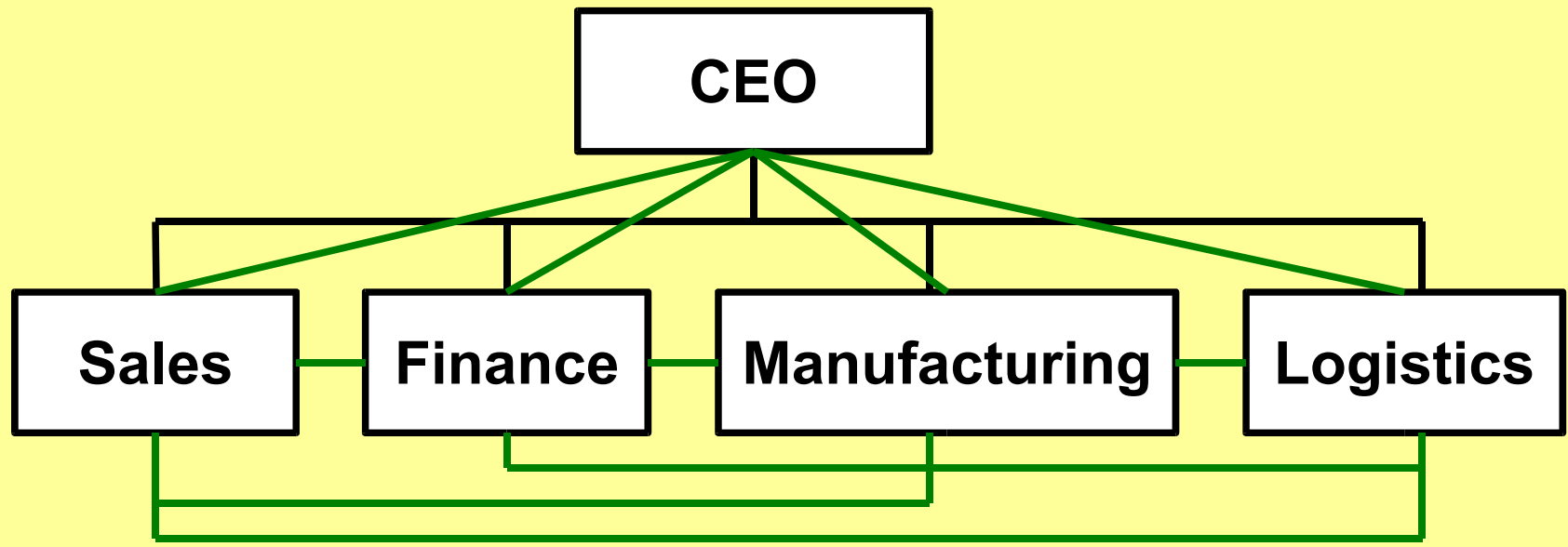


# Flows of responsibility, meaning and control

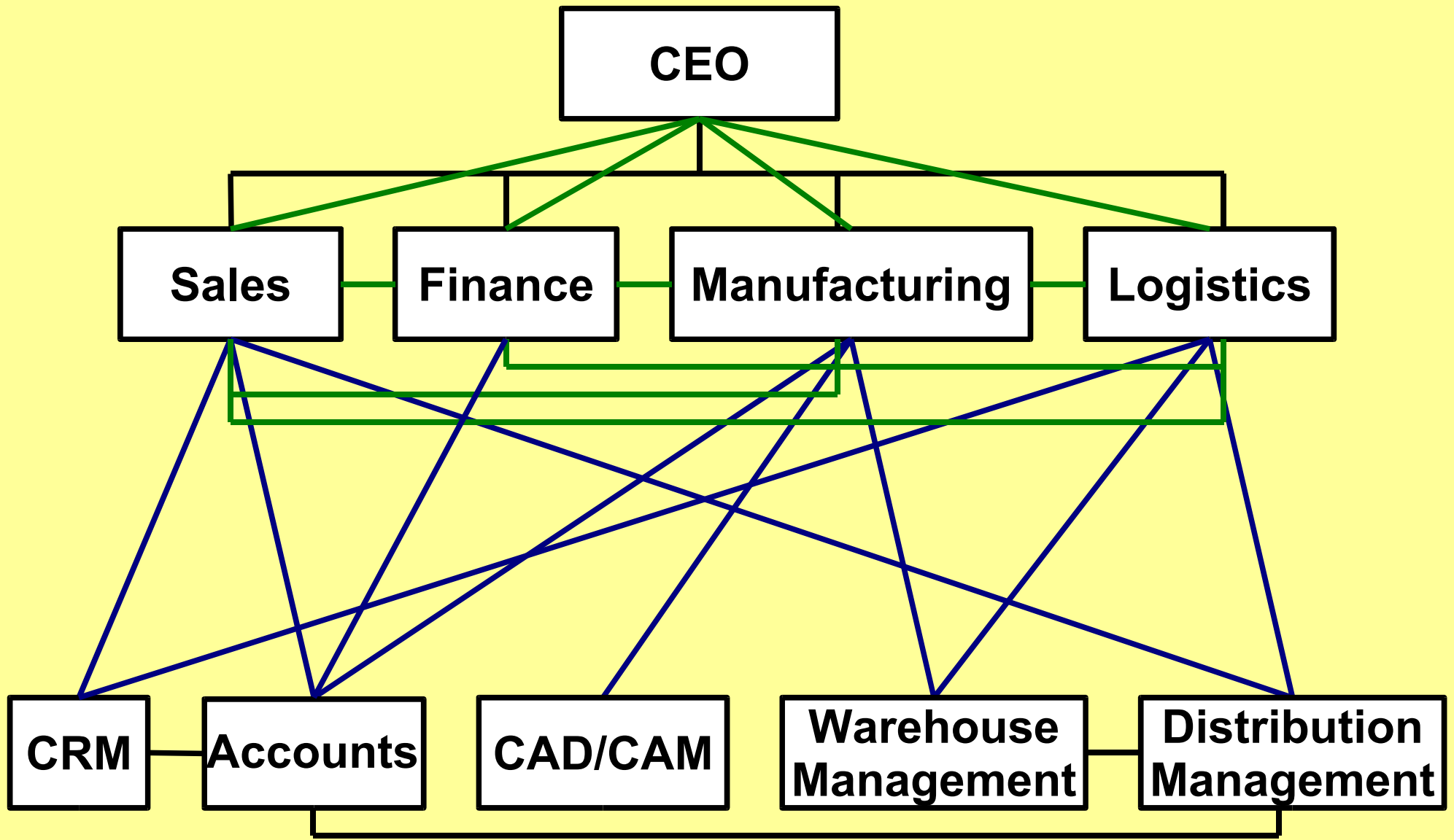




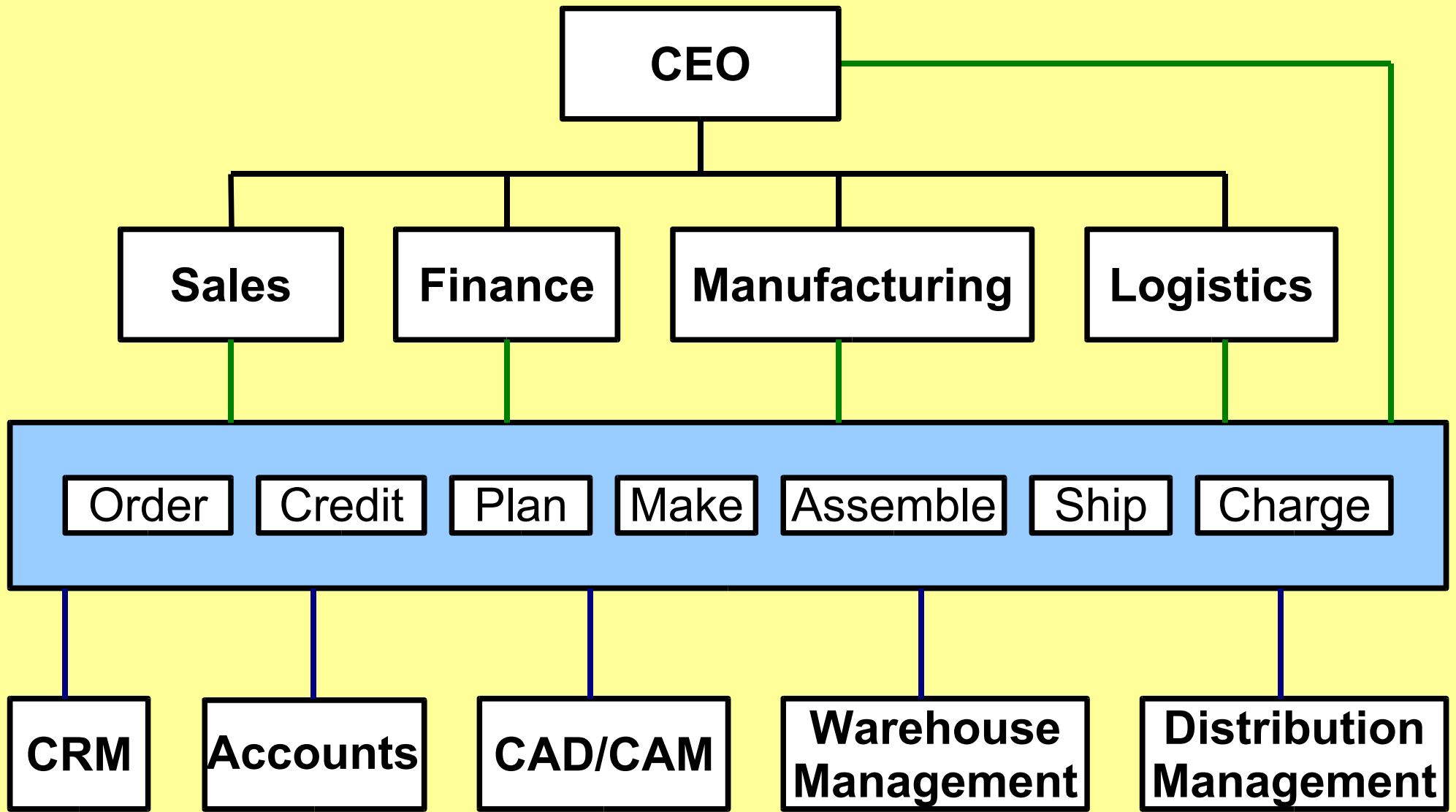
# IT structures



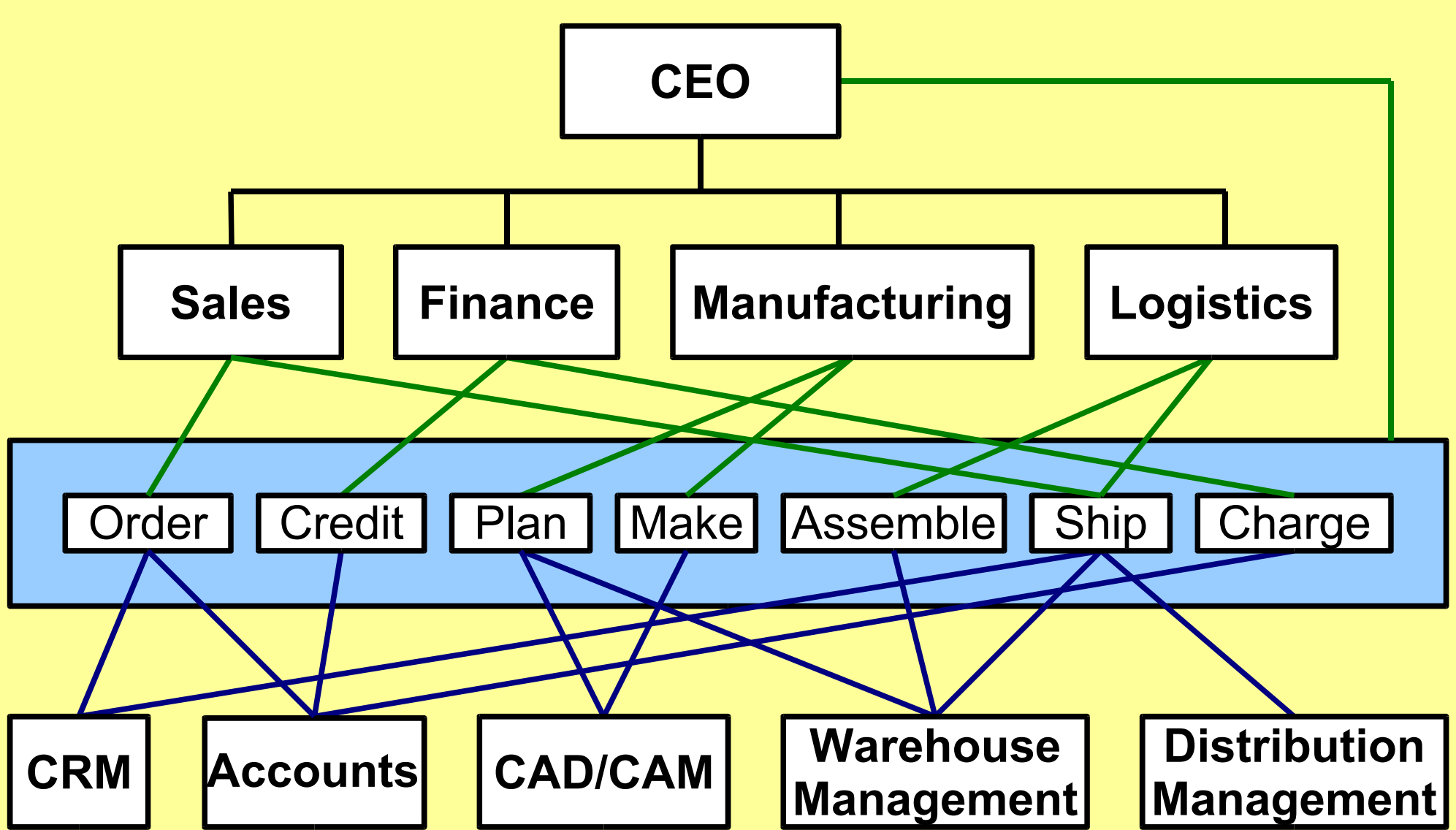
# Two structures, four types of link - a typical organisation

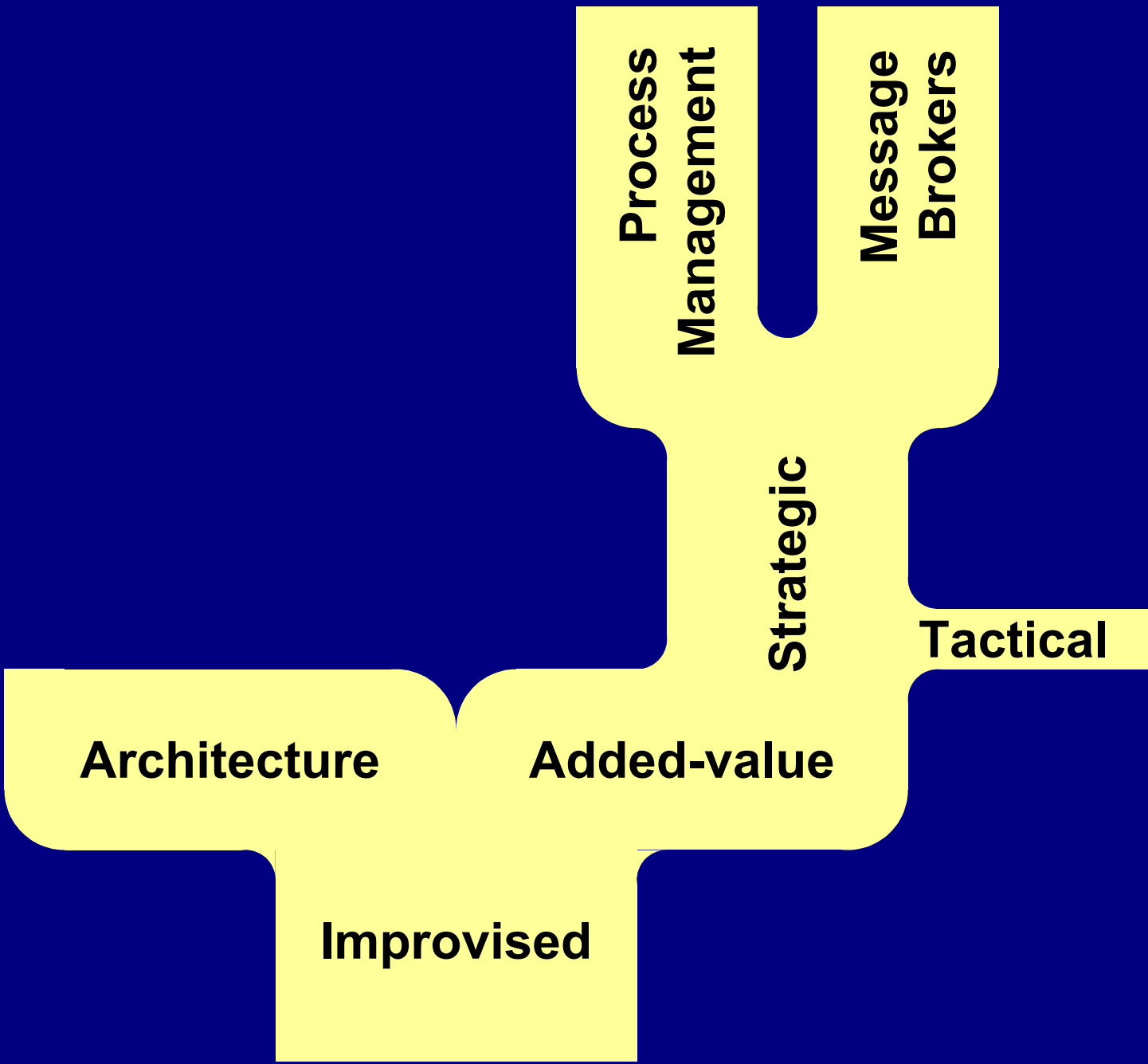


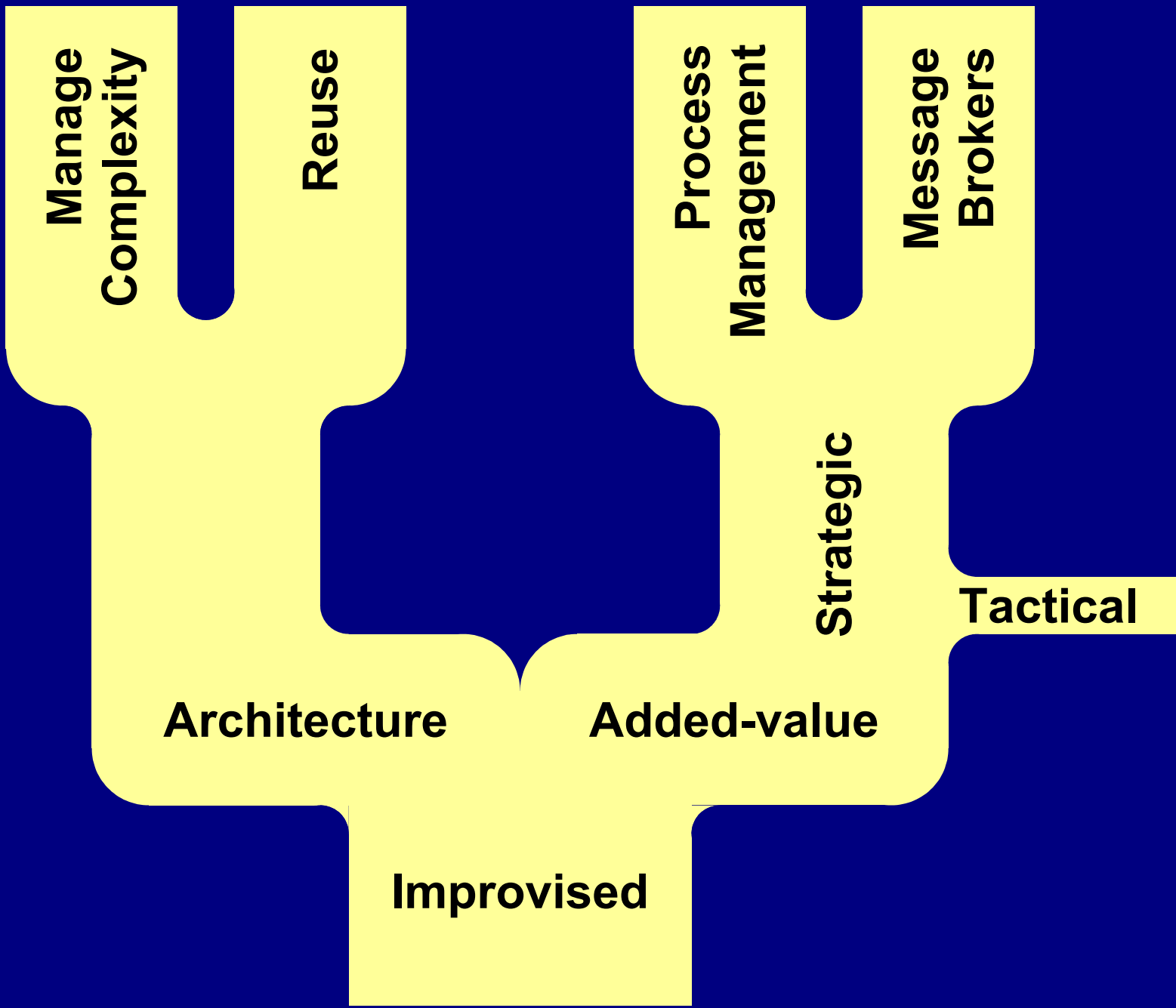
# Process management gives end-to-end control and visibility...



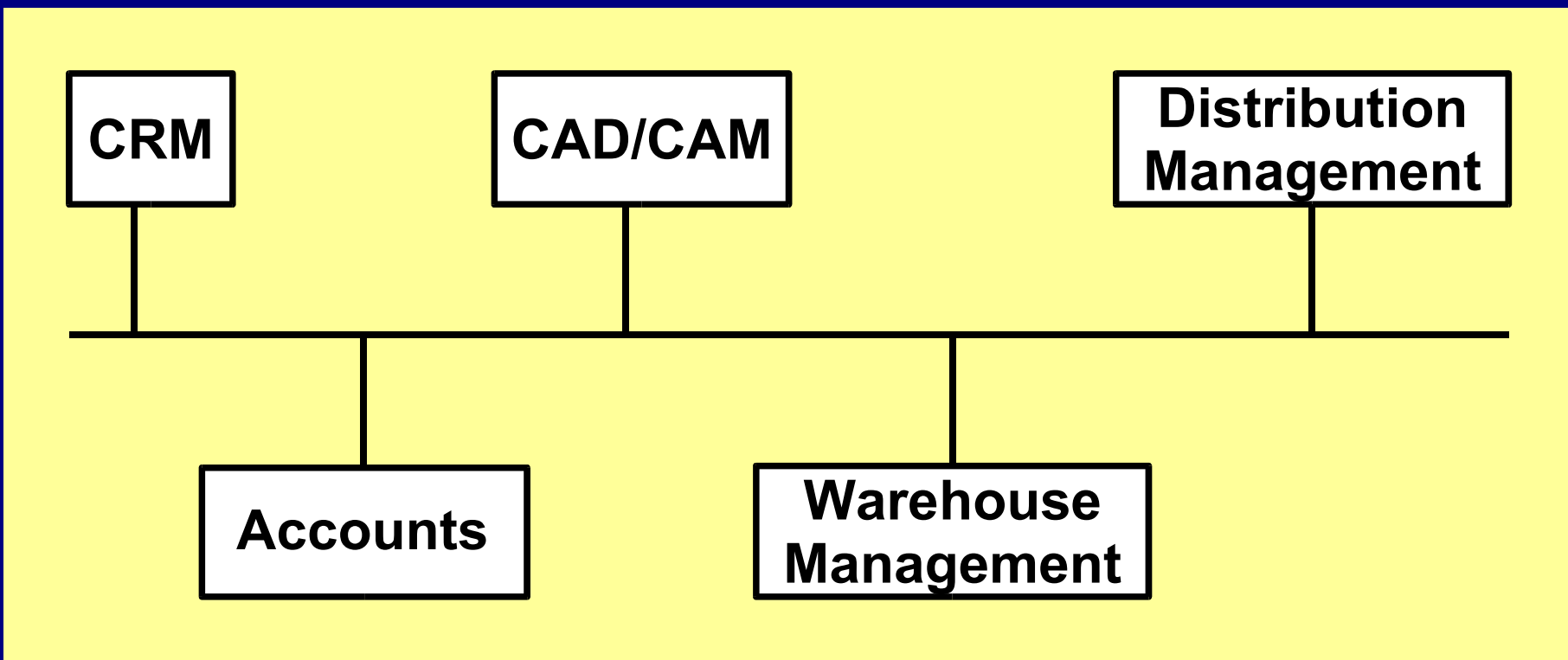
... but in reality the process still spans multiple responsibilities



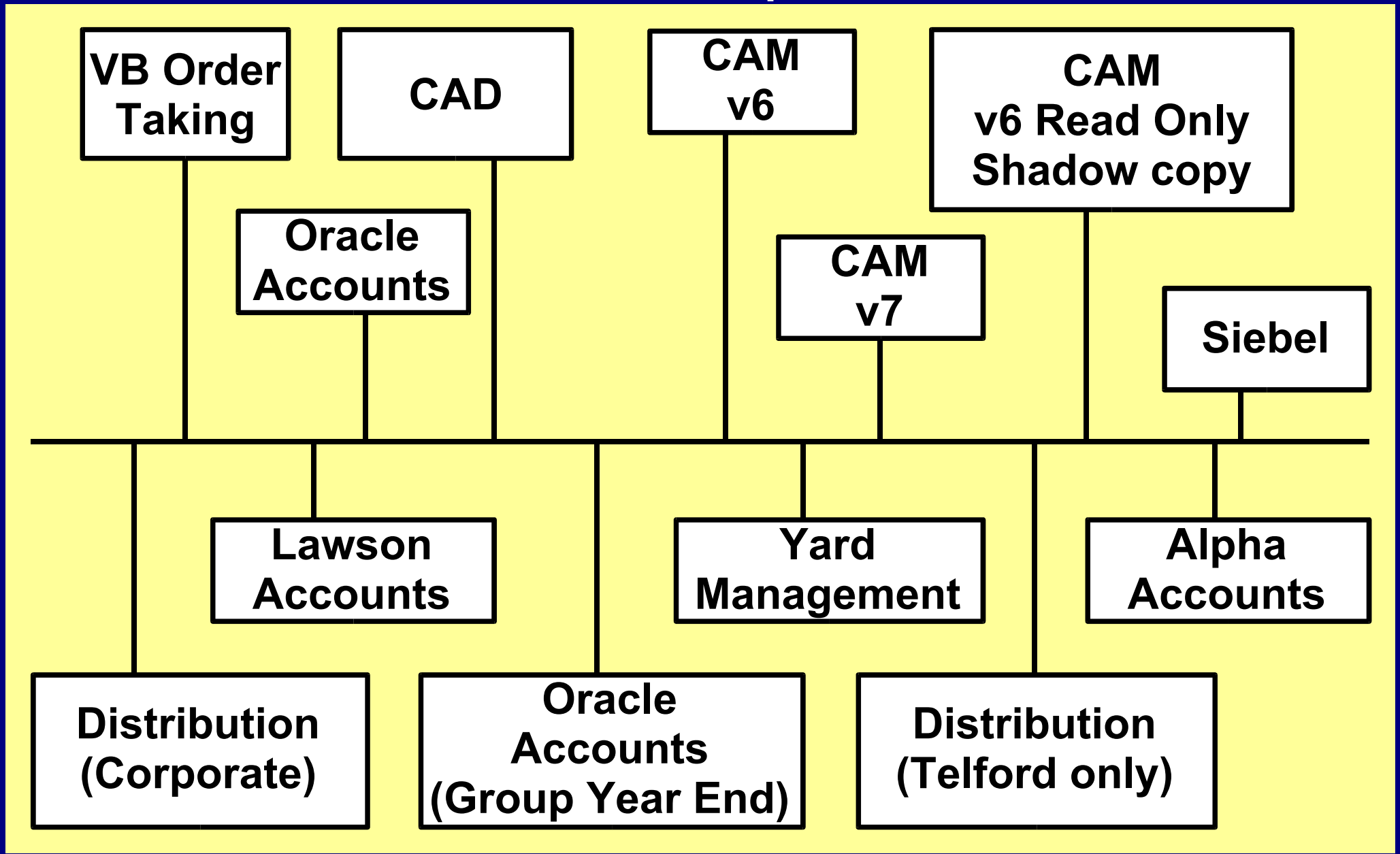




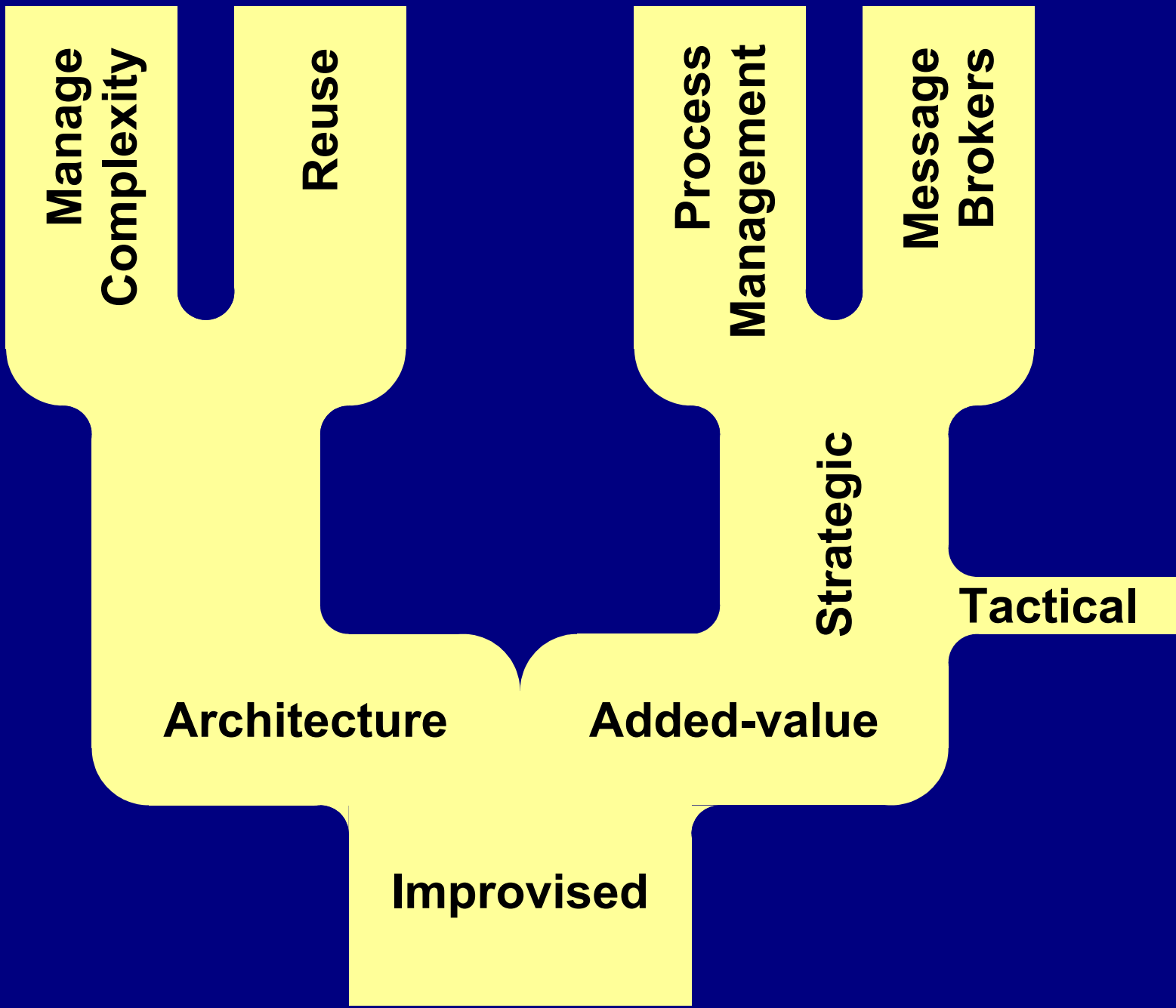
# A service bus approach can manage integration complexity...



**...but soon builds to standardised improvisation**









Survey  
Time!

	<b>Statement A</b>	<b>Statement B</b>
<b>1</b>	IT delivers value by automating processes	IT delivers value by changing processes
<b>2</b>	IT professionals build the best IT solutions	Excel is a valuable business tool
<b>3</b>	Business change should be owned outside IT	IT should drive business change
<b>4</b>	IT will merge into general business management	Businesses will be defined by their IT
<b>5</b>	Enterprise-wide systems are most efficient	Every system needs an owner

	Score
1	B = 2, ? = 1
2	A = 2, ? = 1
3	B = 2, ? = 1
4	B = 2, ? = 1
5	A = 2, ? = 1

## Minimal

## Expansive



A: IT delivers value by automating processes

B: Excel is a valuable business tool

A: Business change should be owned outside IT

A: IT will merge into general business management

B: Every system needs an owner

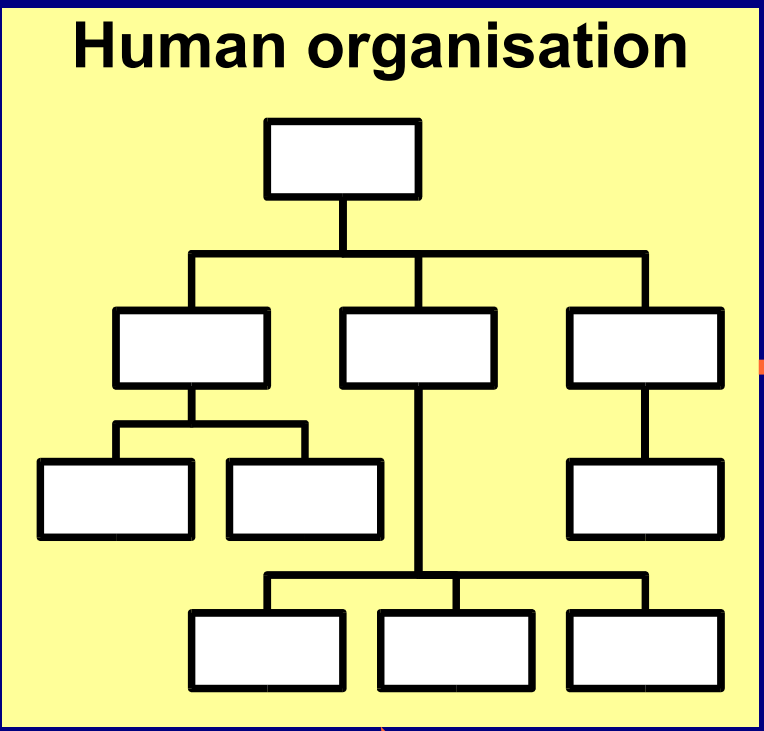
B: IT delivers value by changing processes

A: IT professionals build the best IT solutions

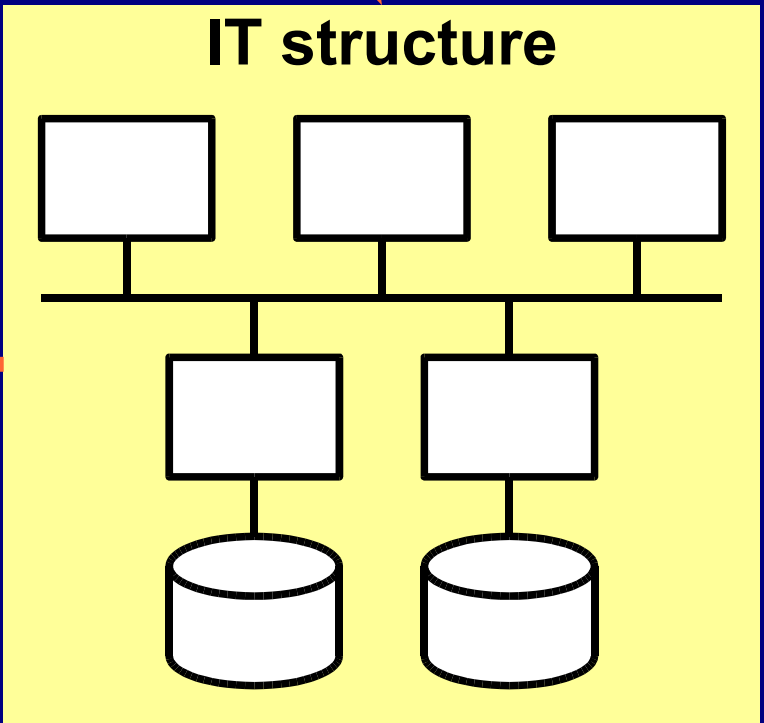
B: IT should drive business change

B: Businesses will be defined by their IT

A: Enterprise-wide systems are most efficient



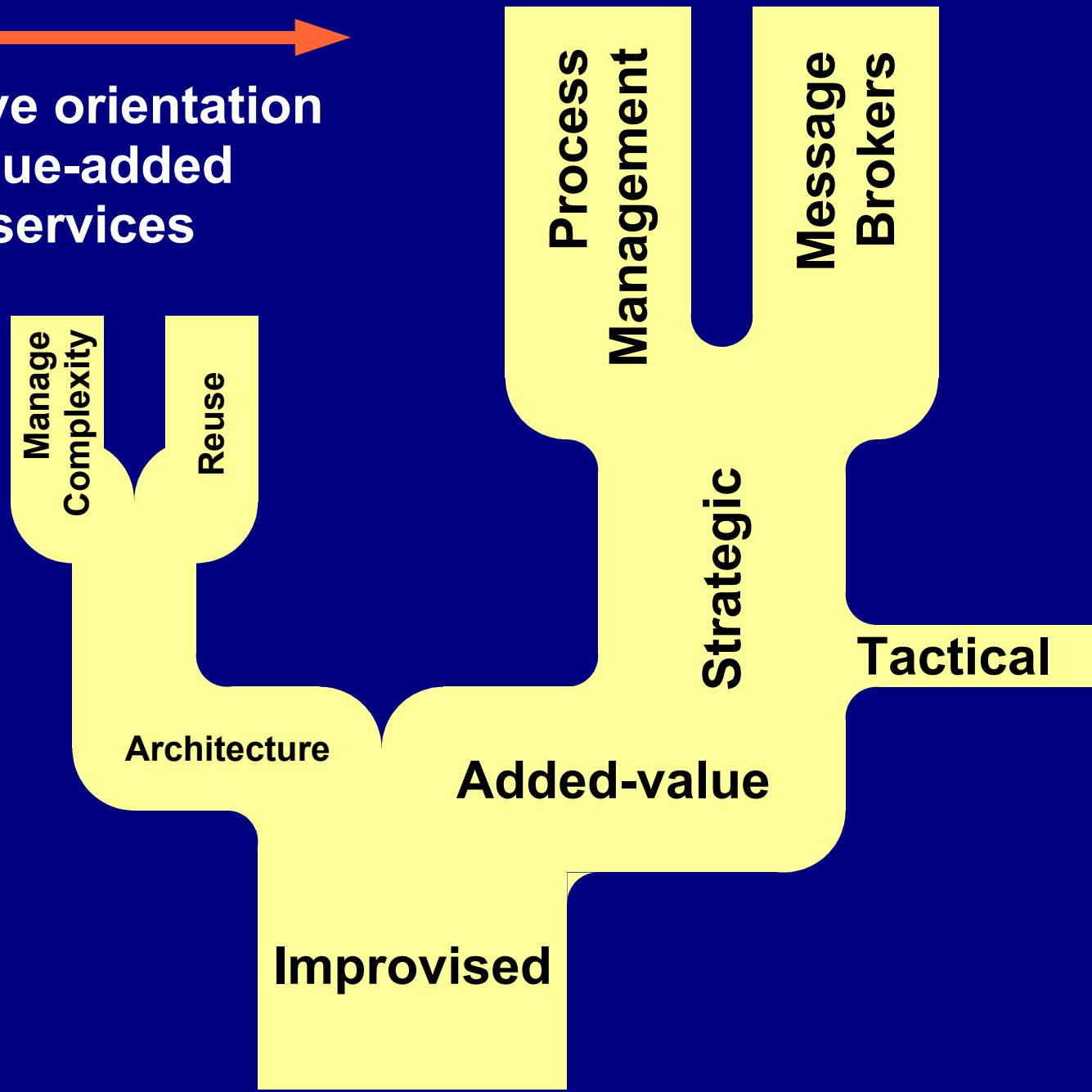
**Expansive orientation  
optimises the IT and then  
changes the organisation**



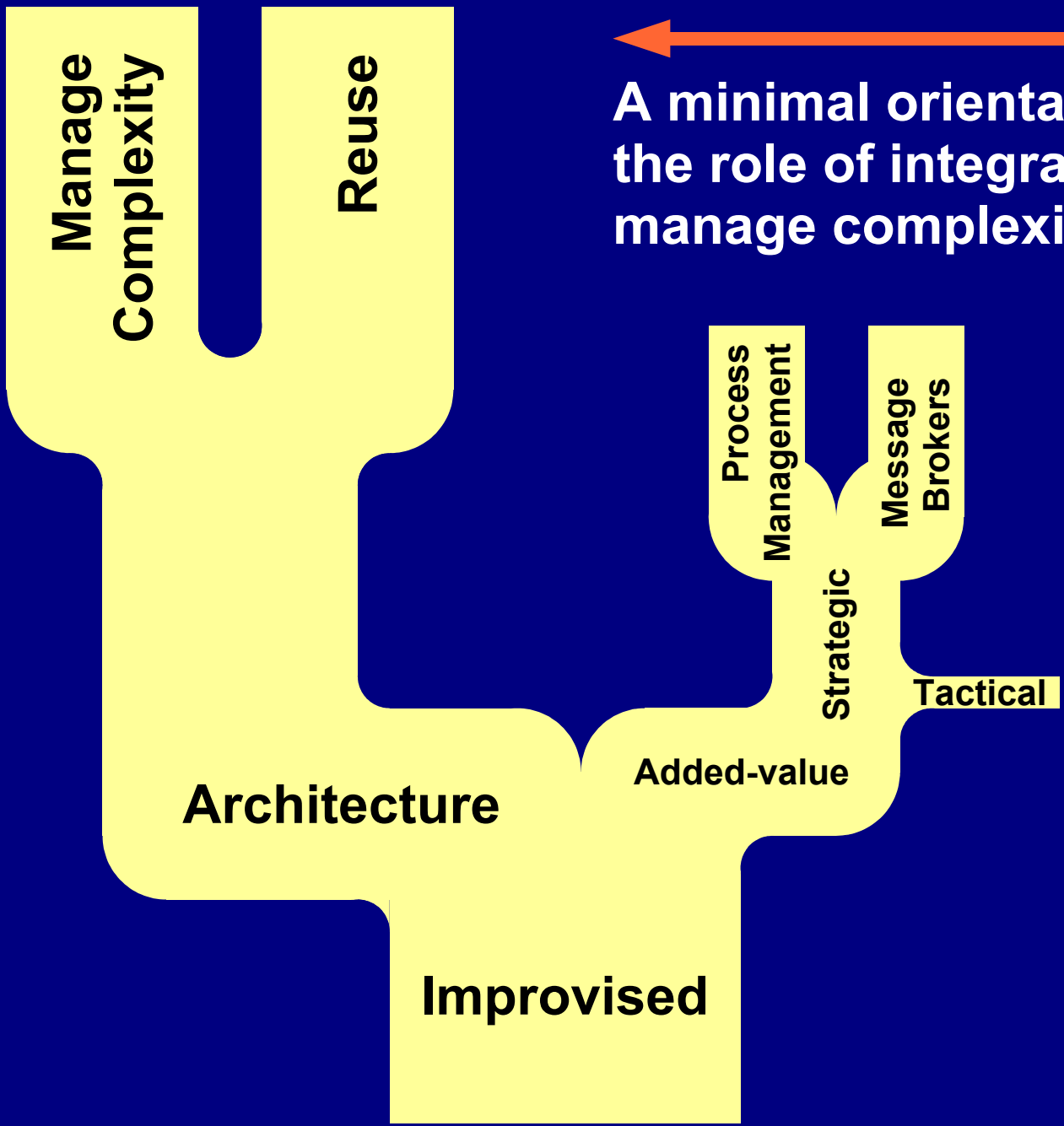
**Minimal orientation  
optimises the organisation  
and then changes IT**



**An expansive orientation stresses value-added integration services**

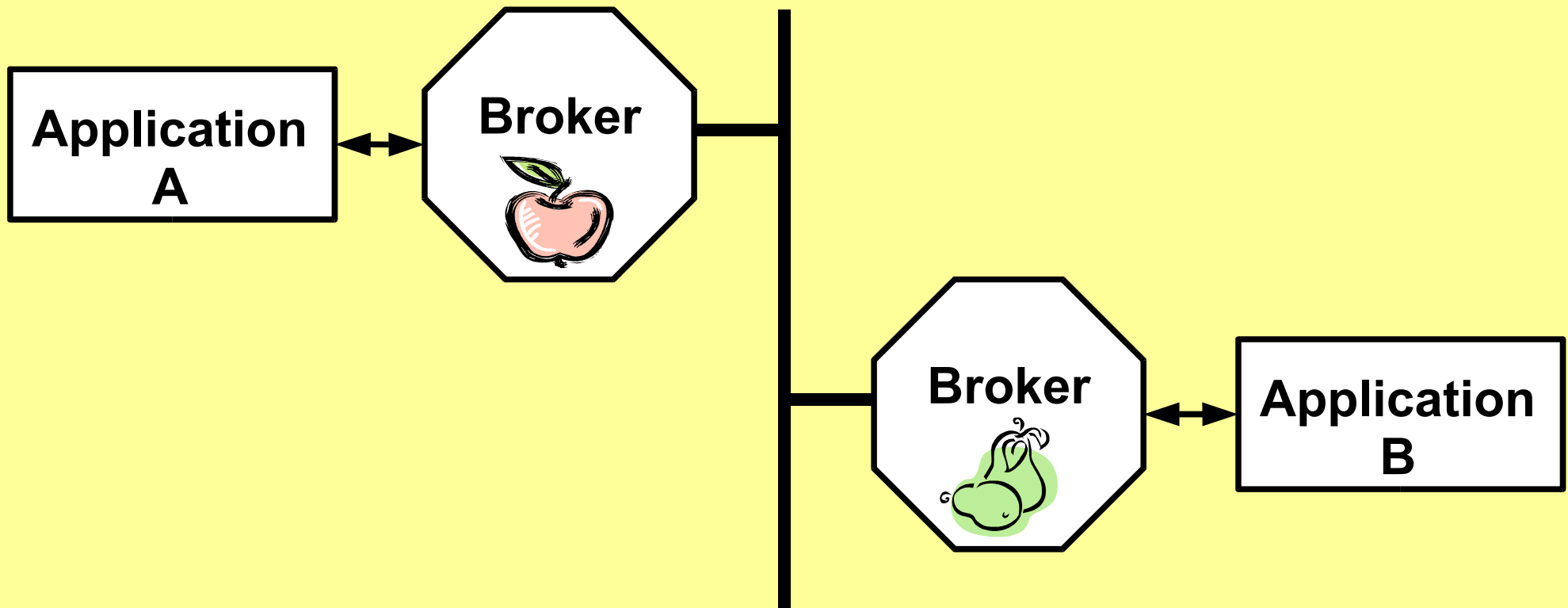






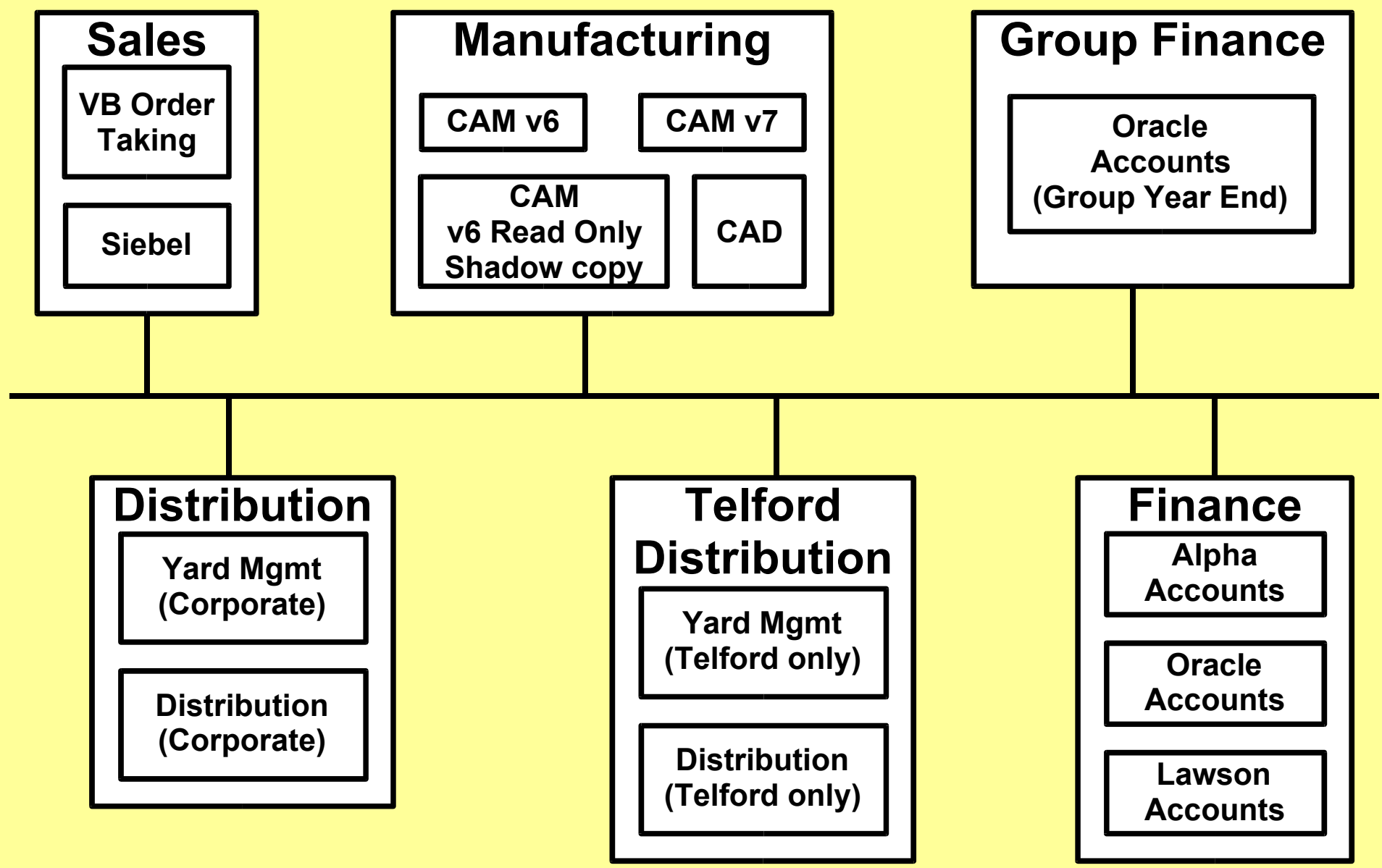
←  
**A minimal orientation stresses the role of integration to manage complexity**

Basing integration on hand-offs of responsibility allows each transformation to be made *on behalf of* one or other party, which increases accountability and simplifies support.

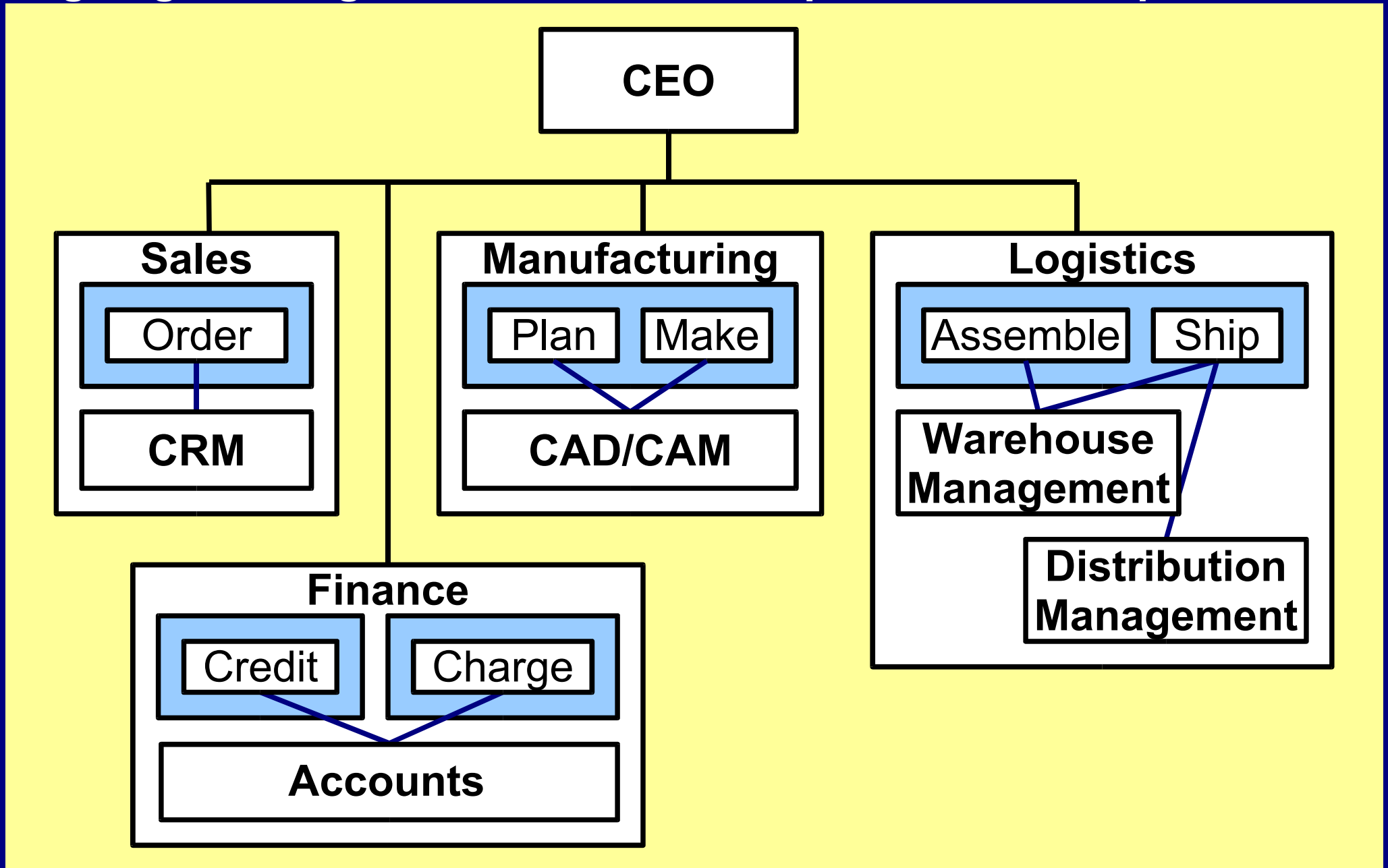




# Aligning IT to organisation clarifies structure to manage complexity



# Aligning IT to organisation clarifies responsibilities for processes





## Hot topics for debate

- The role of process management tools in business change
- The use of optimised process and data models as a basis for integration

## More generally

- The role of enterprise-wide systems
- The role of IT in business change

# General recommendations

- Build a standards-based bus and keep it current
- Limit tactical tools to short-term problem solving
- Reflect on the purpose of integration
- Avoid conflict of interests from advisors



# Minimal integration recommendations

- Use actual organisational structure to define system boundaries
- Use actual hand-offs of responsibility to define interfaces
- Make every system responsible for meeting standards
  - Always know on who's behalf the broker is working
- Use process management tools only for owned processes

# **Business Aligned Integration Architecture**

Andrew Clifford  
Minimal IT Ltd

[andrew.clifford@minimalit.com](mailto:andrew.clifford@minimalit.com)

**Available on [www.minimalit.com](http://www.minimalit.com)**

- Summary of the presentation
- Slides of the presentation
- Further ideas on the minimal view
- Details of training and consultancy